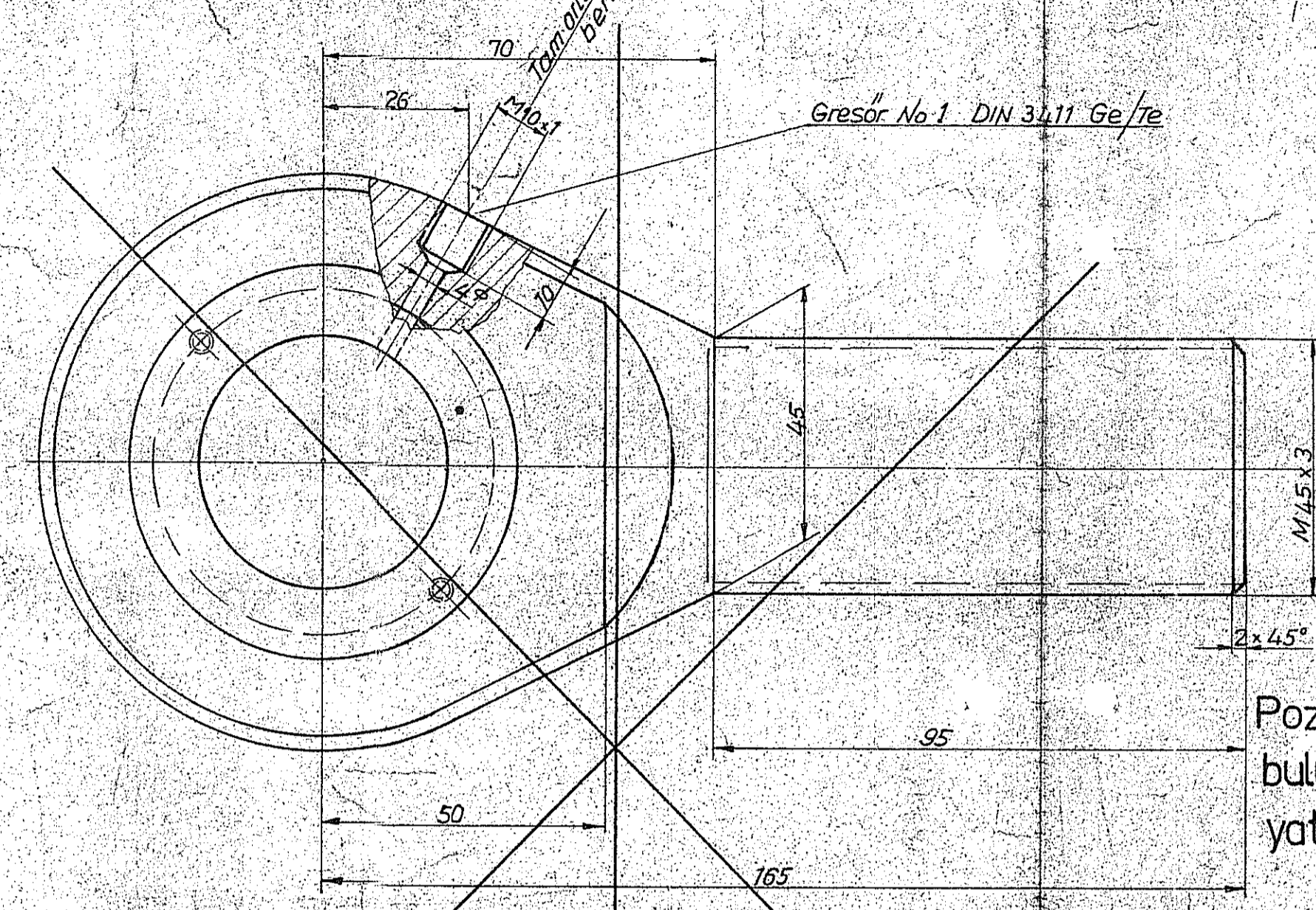


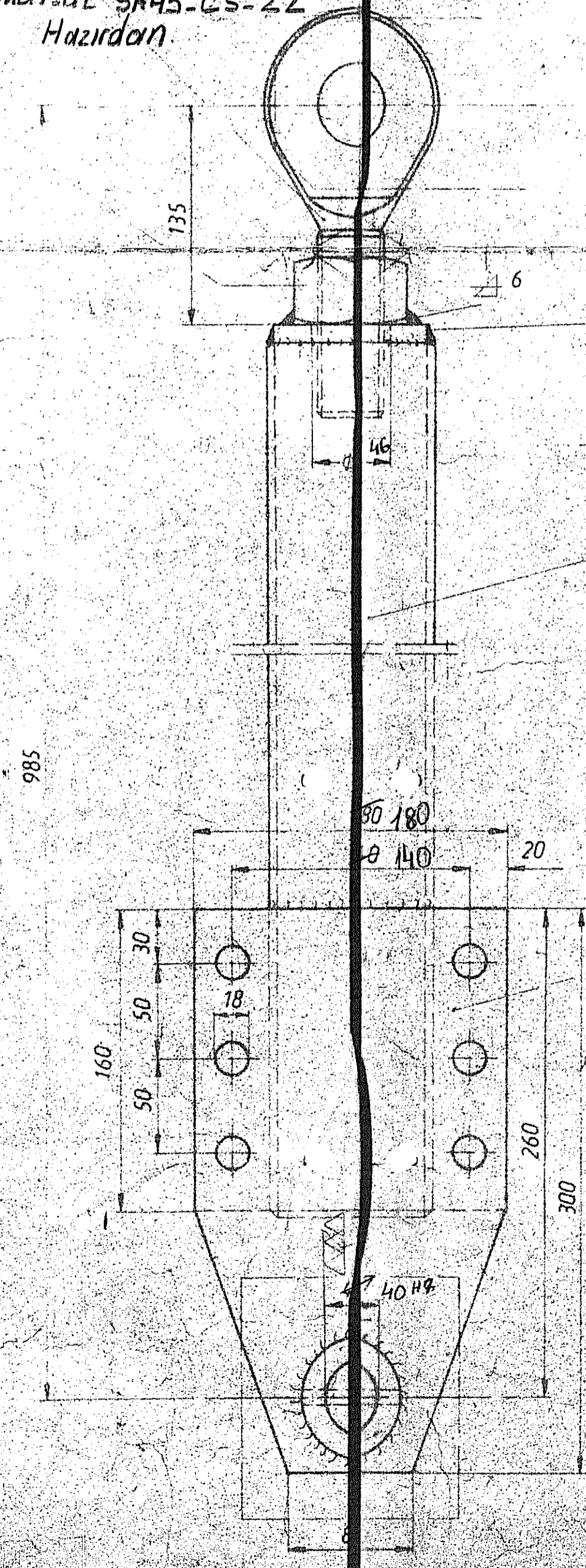
Poz 2, SA 45CS-2Z Seri no.lu SKF imalatı parça
 Bulunmadığı takdirde görülen parça
 imal edilecek



NOT
 Poz 2, SKF SA45CS-2Z Seri no.lu rulman
 bulunmadığı için 15.01.02-8/2 si olarak yeni
 yataklama düzeni orijinele çizildi.

Torna kroki
 Verildi 3

Dynak Matrisal SA45-CS-2Z
 Hazırdan 2

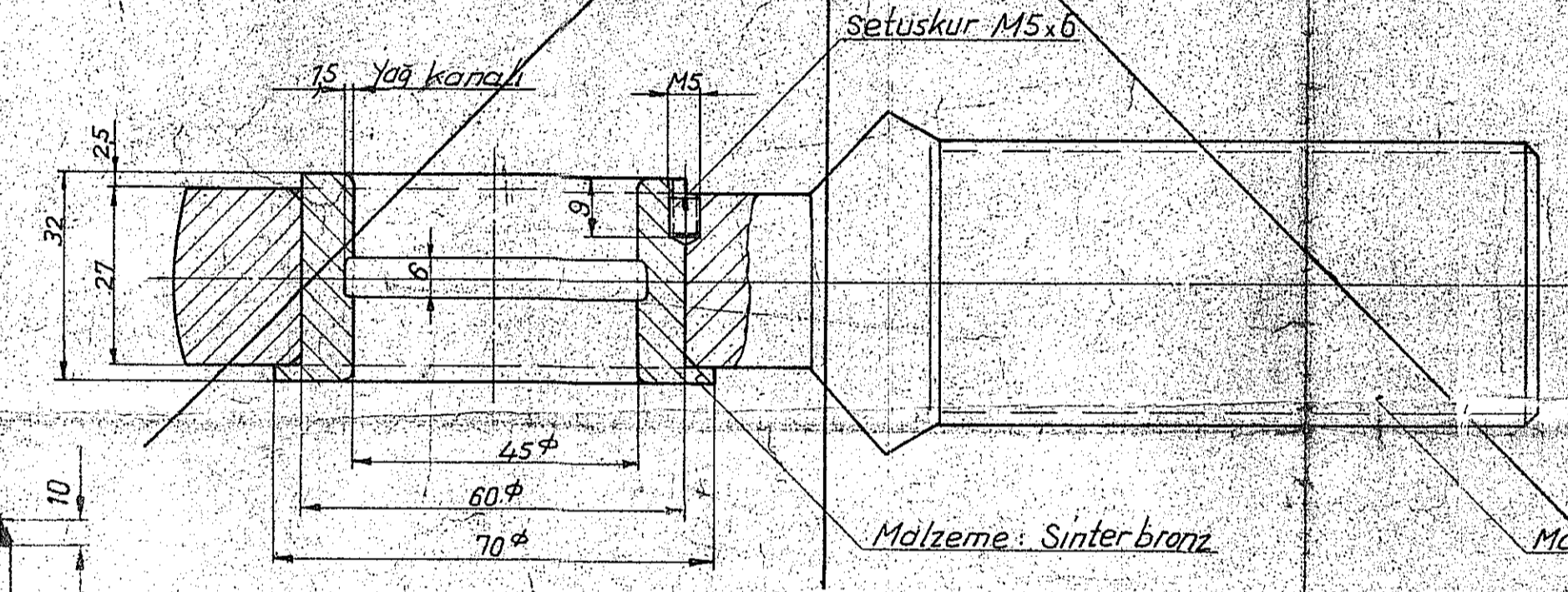
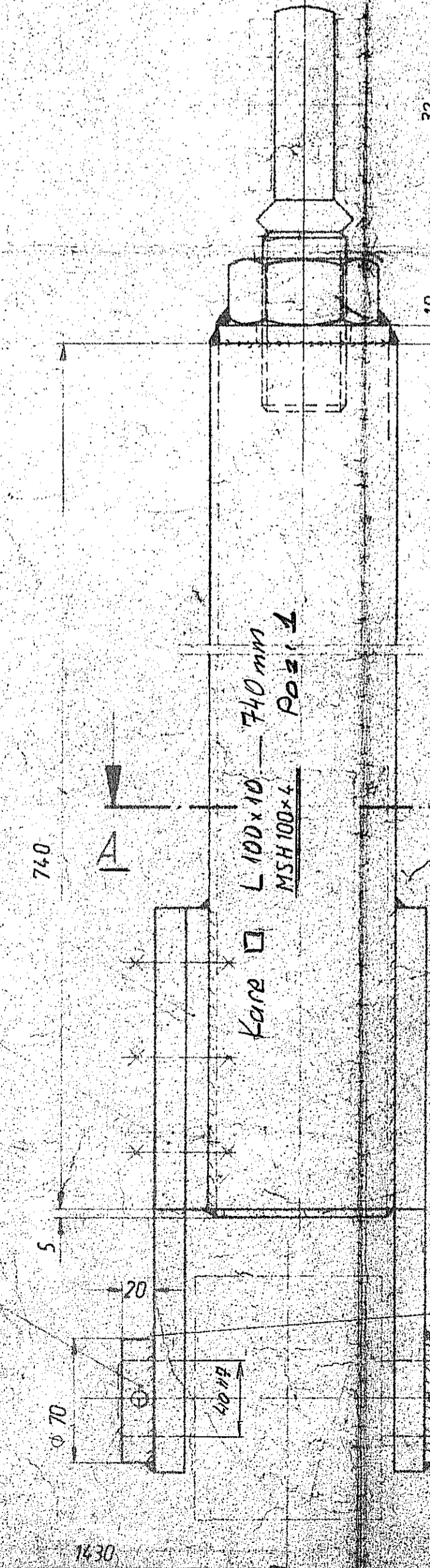


Torna kroki
 Verildi 6

Sablonla Göre Kesilecek 8

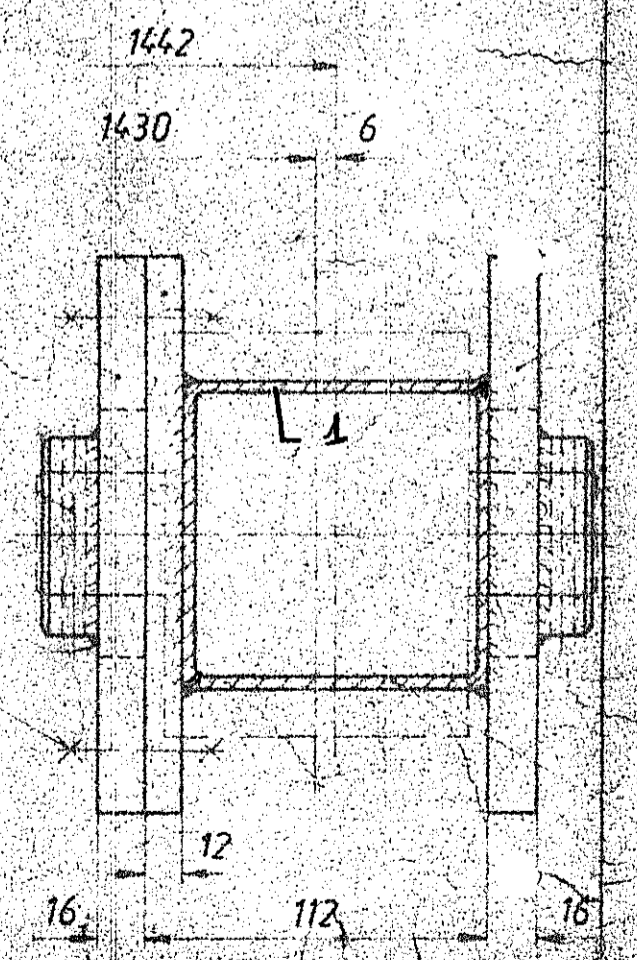
Sablonla Göre Kesilecek 7

Torna kroki
 Verildi 4



Malzeme: Dövme çelik
 Malzeme listesi No: 94

Kesit
 Schnitt A-B



Bolzen nach Zchg. 611001 - Pos. 8
 Pm 8x100 mm boy
 Loch für den Stift mit Bolzen und Ring
 zusammen geböhrt
 Nach dem Zusammenbau Ring Pos. 4
 angeschweißt.

TOLERANSLAR	
40 H7	0,025
0	0

15.01.02-8

SIYIRICI IZGARA TASIYICI KOLLARI

SKITZBOCK ROSTTRÄGER
 für Klässierer

BMA 61100-142
 15 Haziran